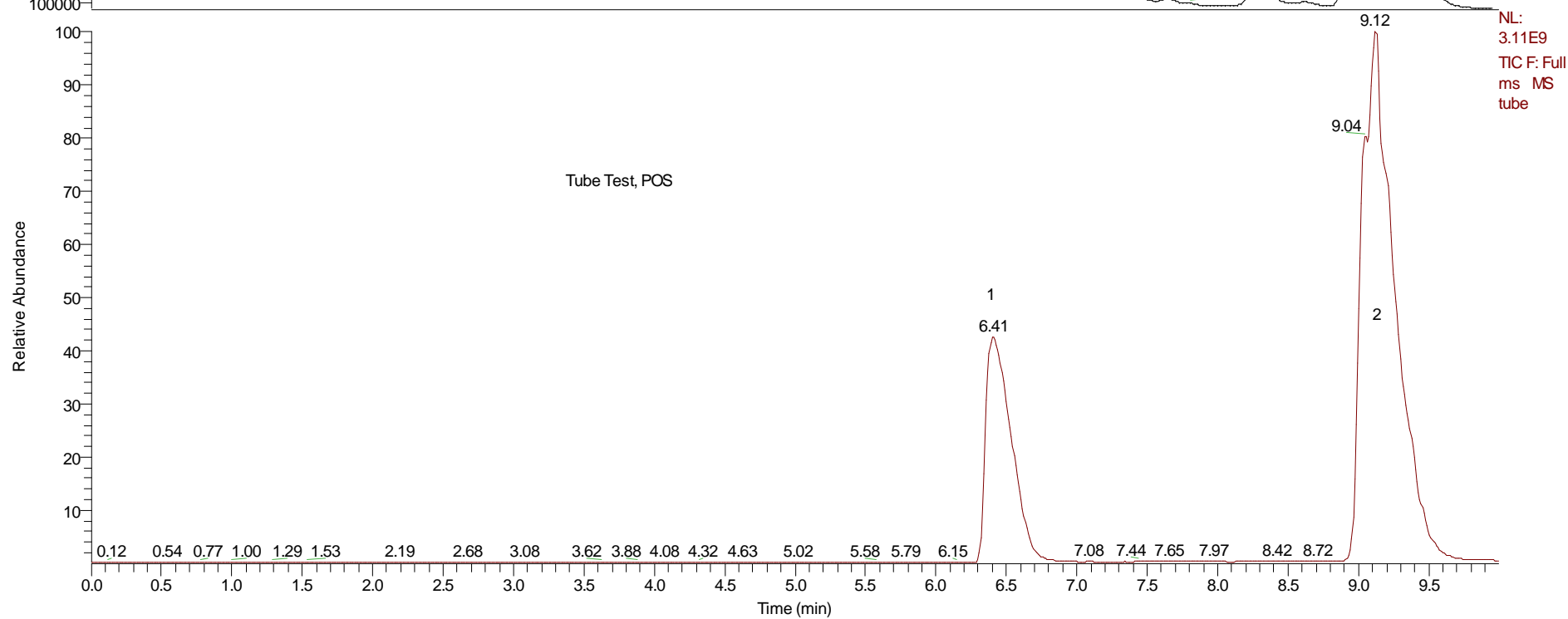
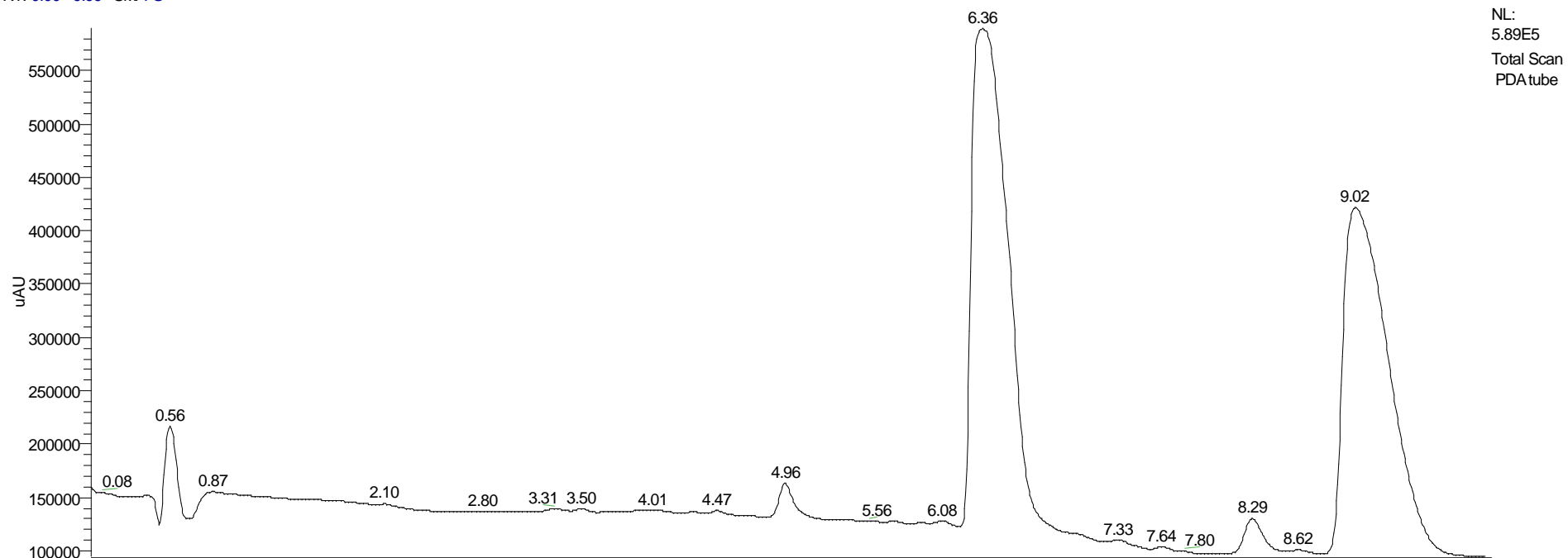
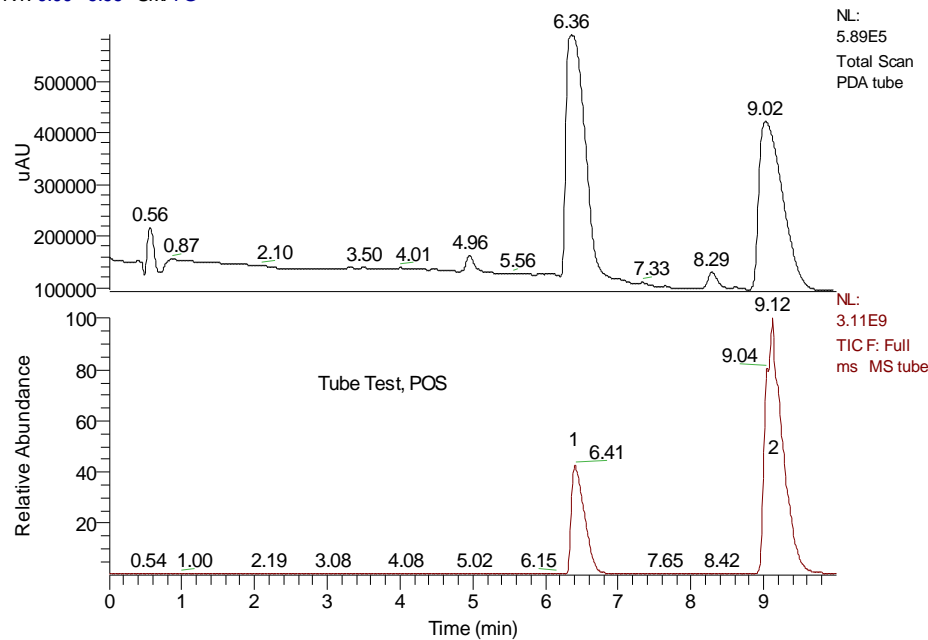
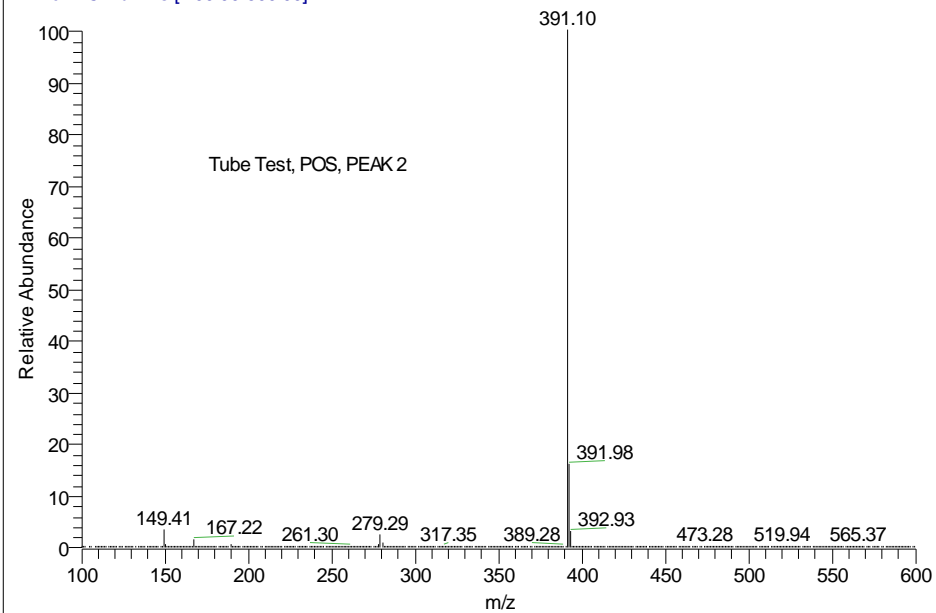
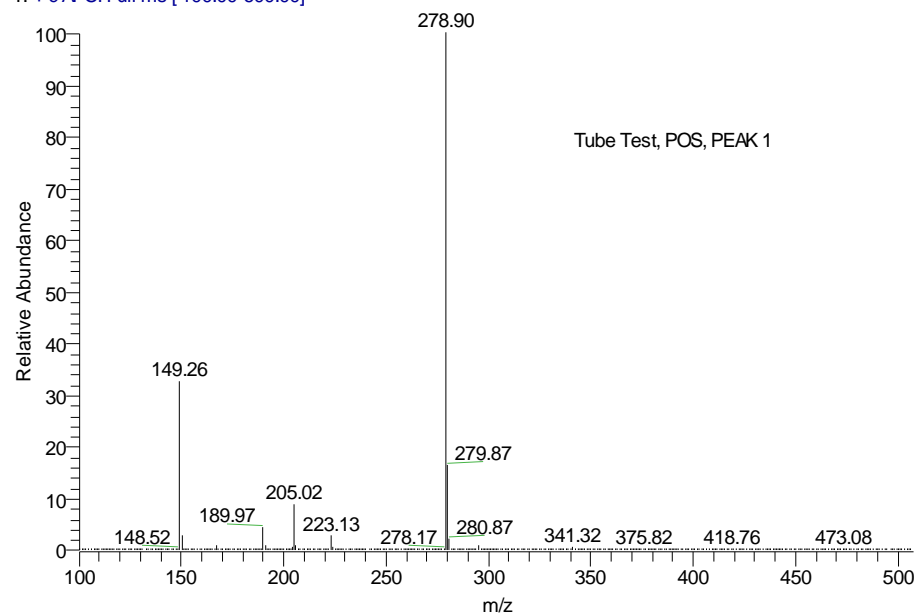
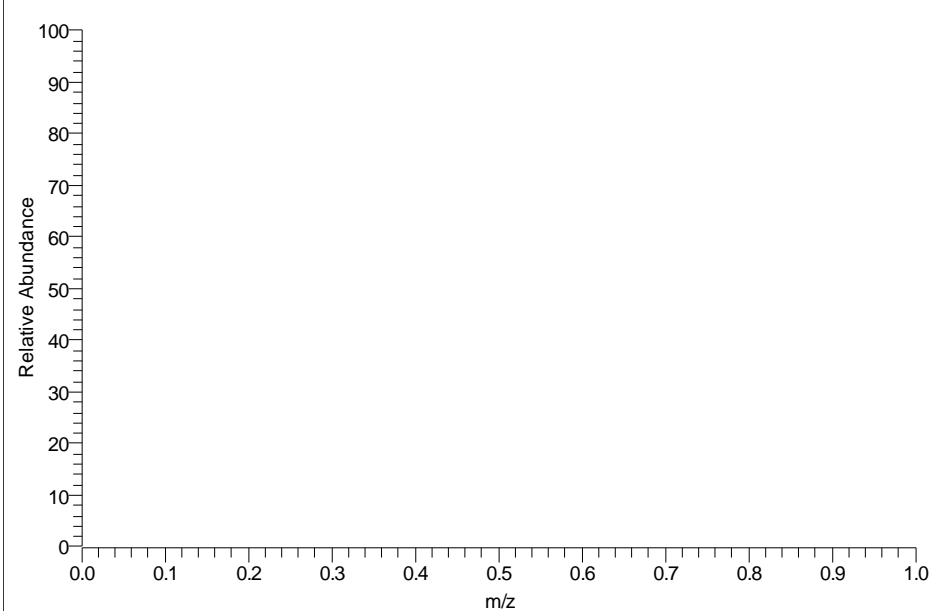


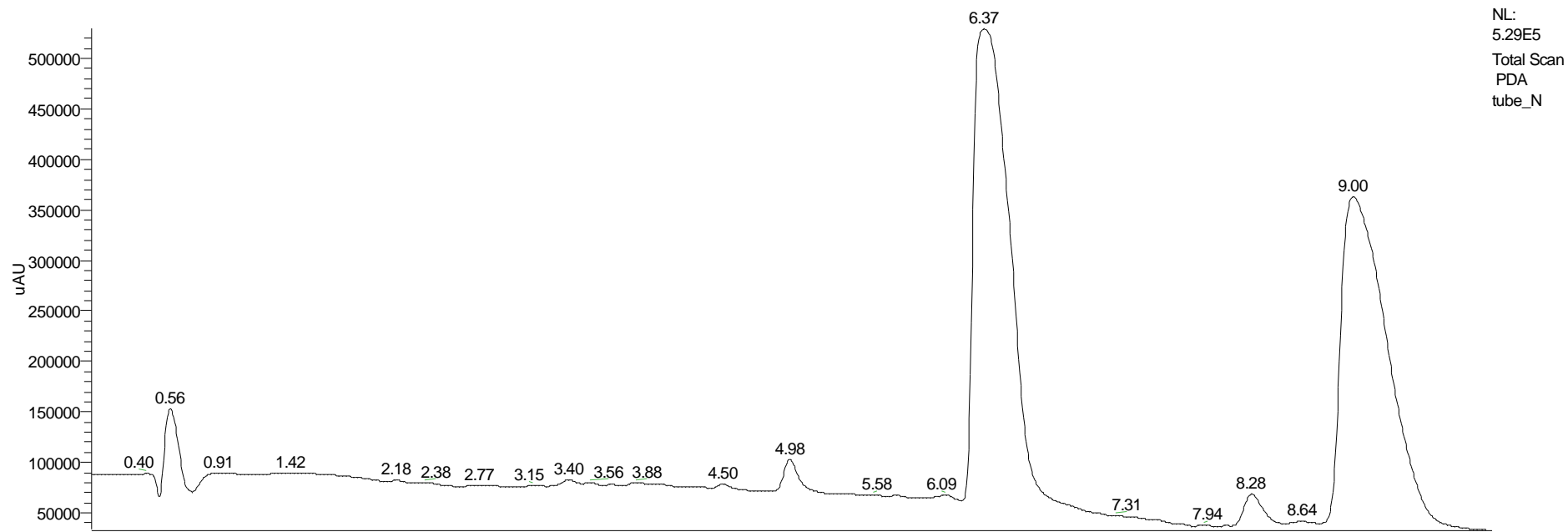
RT: 0.00 - 9.99 SM: 7G



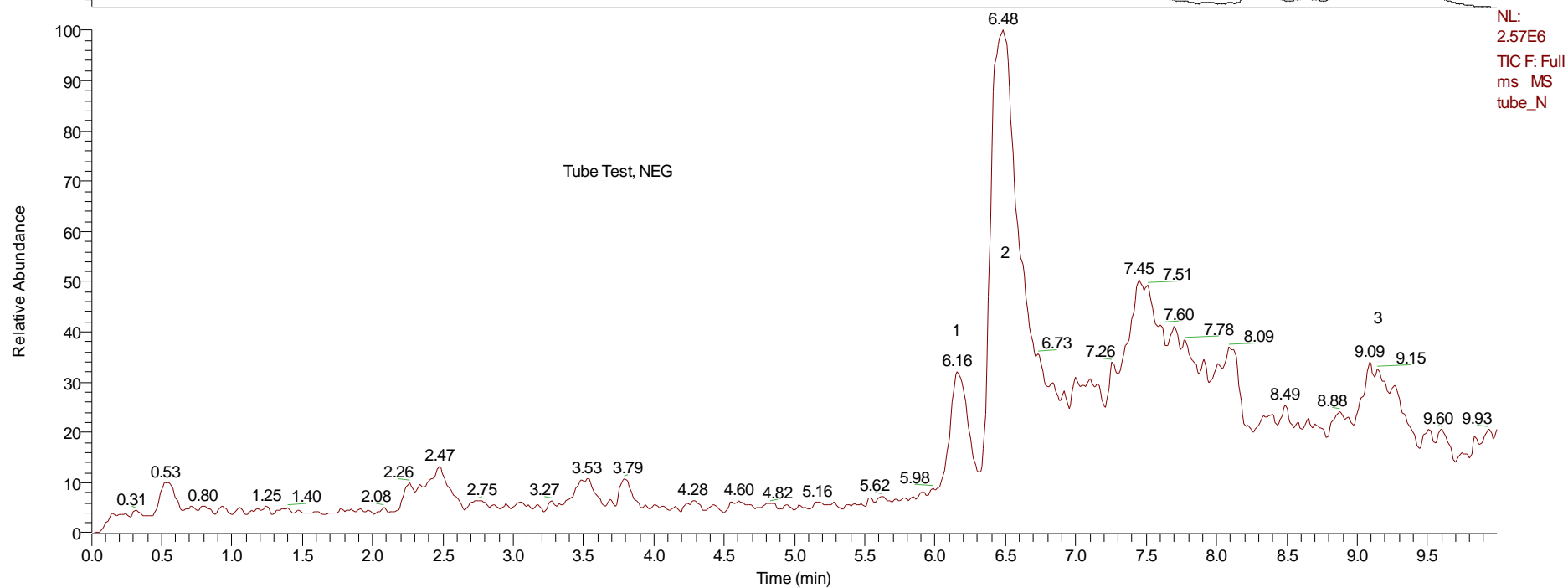
RT: 0.00 - 9.99 SM: 7G

tube #744-780 RT: 8.98-9.34 AV: 37 NL: 1.53E9  
T: + c APCI Full ms [ 100.00-600.00]tube #515-538 RT: 6.33-6.56 AV: 24 NL: 5.26E8  
T: + c APCI Full ms [ 100.00-600.00]tube #1 RT: 0.00 AV: 1 NL: 0  
T:

RT: 0.00 - 9.99 SM: 7G

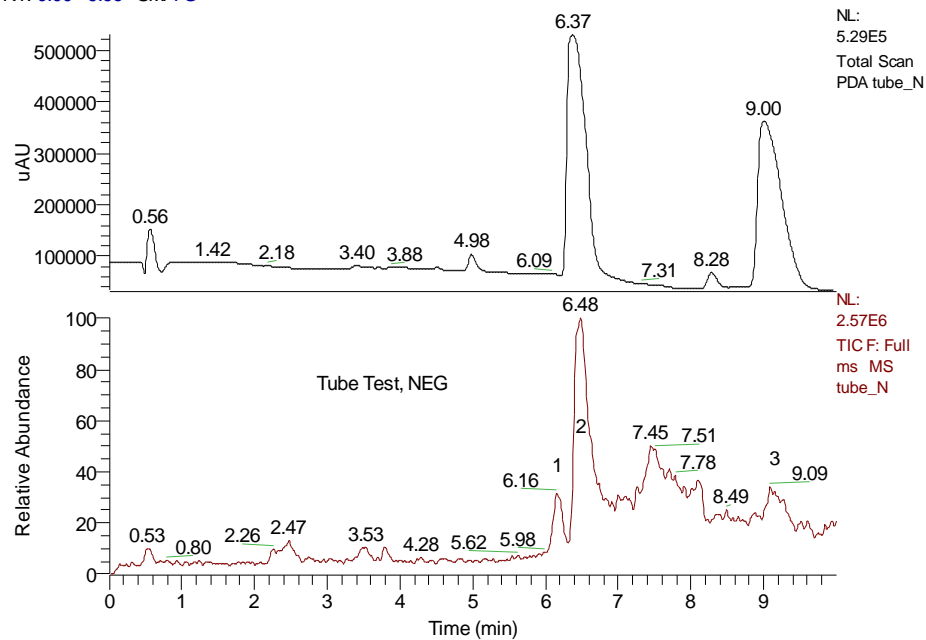
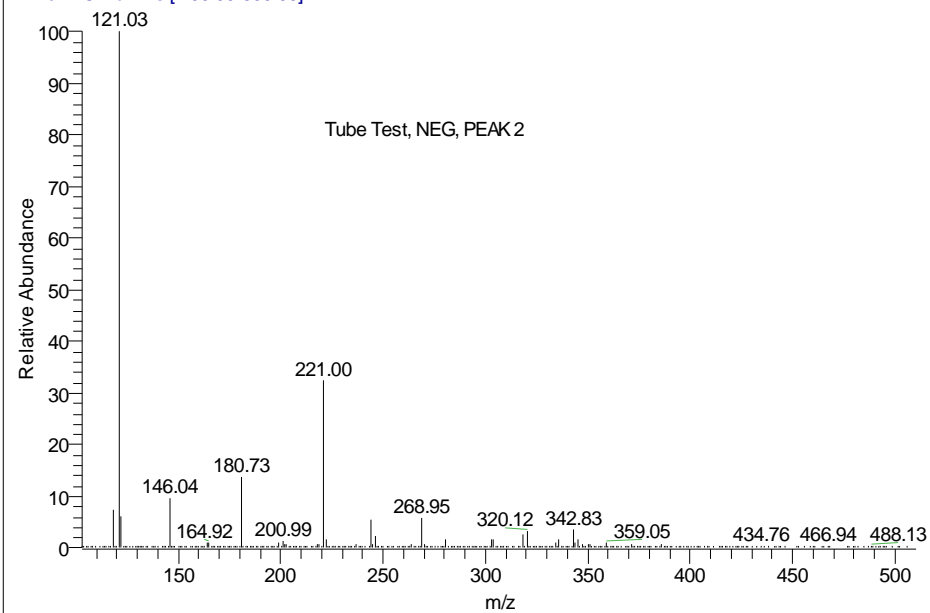
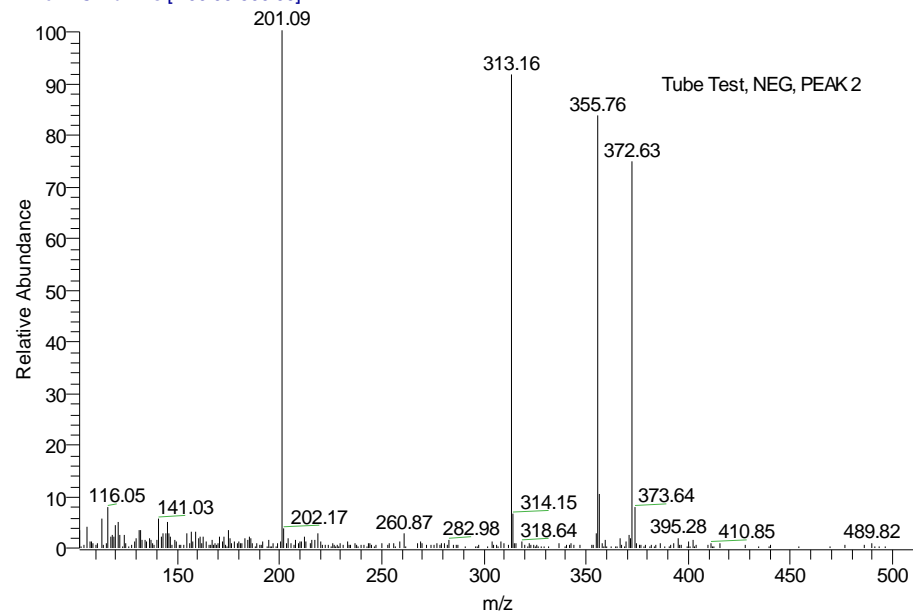


NL:  
5.29E5  
Total Scan  
PDA  
tube\_N



NL:  
2.57E6  
TIC F: Full  
ms MS  
tube\_N

RT: 0.00 - 9.99 SM: 7G

tube\_N #551-570 RT: 6.39-6.61 AV: 20 SB: 257 4.71-6.04, 7.00-8.65 NL: 7.86E5  
T: - c APCI Full ms [ 100.00-600.00]tube\_N #524-540 RT: 6.08-6.26 AV: 17 NL: 9.86E4  
T: - c APCI Full ms [ 100.00-600.00]tube\_N #770-808 RT: 8.97-9.42 AV: 39 SB: 58 7.98-8.65 NL: 8.35E4  
T: - c APCI Full ms [ 100.00-600.00]