

## TECHNICAL NOTE

Weather Miller Coyle,<sup>1</sup> Ph.D.; Gary Shutler,<sup>2</sup> Ph.D.; Sharon Abrams,<sup>2</sup> B.Sc., Pharm.;  
Annet Hanniman,<sup>2</sup> B.Sc. (Hons); Suzanne Neylon,<sup>1</sup> M.S.; Carll Ladd,<sup>1</sup> Ph.D.; Timothy Palmbach,<sup>1</sup> Esq.;  
and Henry C. Lee,<sup>1</sup> Ph.D.

## A Simple DNA Extraction Method for Marijuana Samples Used in Amplified Fragment Length Polymorphism (AFLP) Analysis\*

**ABSTRACT:** As a first step in developing a molecular method for the individualization of marijuana samples, we evaluated a plant DNA extraction kit. The QIAGEN plant DNeasy method uses a spin column format for recovery of DNA and is effective for obtaining high molecular weight DNA from leaf, flower (bud), and seed samples of marijuana. The average DNA yield was 125–500 ng per 100 milligrams of fresh plant tissue. The recovered DNA was of polymerase chain reaction (PCR) quality as measured by the ability to generate reproducible amplified fragment length polymorphism (AFLP) profiles. AFLP is a technique used to create a DNA profile for plant varieties and is being applied to marijuana samples by the authors to link growers and distributors of clonal material. The QIAGEN plant DNeasy method was simple, efficient, and reproducible for processing small quantities of marijuana into DNA.

**KEYWORDS:** forensic science, DNA typing, *Cannabis*, marijuana, plant DNA, amplified fragment length polymorphism

As the initial step in developing and implementing a plant DNA typing method for individualizing marijuana samples, we assessed a plant DNA extraction kit manufactured by QIAGEN. Traditional plant DNA extractions utilize a time-consuming cesium chloride gradient purification or a hexadecyltrimethylammonium bromide (CTAB) extraction (1) that can yield variable results depending on the experience of the scientist and the quality of the plant material. One of the difficulties in plant DNA extractions is a poor yield. This means a large amount (grams) of starting material is required for sufficient DNA recovery. In some drug seizure situations, only a small amount of dried plant material is recovered which makes it difficult for any further testing to be performed. Other complications in plant DNA extractions include the presence of inhibitory compounds such as tannins, phenolics, and polysaccharides in leaves (1). In addition, the large amounts of starch and protein found naturally in seeds may require extra DNA purification steps. These extra purification steps can further reduce yields and recovery of DNA.

It is desirable but difficult to link individual marijuana growers and distributors to specific illicit field and greenhouse operations. Molecular genetics may offer a solution to this problem. In certain

regions of Canada and the United States, marijuana is propagated by taking cuttings from a high-THC content "mother" plant and directly rooting them in the soil (personal communication, Dr. Gary Shutler, RCMP). This clonal form of propagation results in large numbers of plants having identical DNA. DNA typing of marijuana in this situation would allow one to link common grow operations and assess distribution patterns by tracking clonal material. Other growers start their marijuana plants from seed. Each seed has its own unique genetic composition. DNA typing of marijuana grown from seed would allow one to link a leaf found in an individual's vehicle back to a plant from a vacant field near the suspect's home, for example. For cases where small numbers of seed grown marijuana plants can be practically screened, DNA typing would be appropriate. None of the methods currently used to identify marijuana [cystolith hair morphology (2), Duquenois-Levine test (3,4), chromatography (5) or ITS sequences (6,7)] can link the sample to a specific plant or group of clonal plants. The authors wish to emphasize they are developing a technique for individualizing marijuana samples, not for replacing current methods used to identify a sample as marijuana.

In developing such a technique, we have found that the QIAGEN DNeasy plant kit is effective for the extraction of high quality DNA from small quantities of fresh and dried marijuana. The DNeasy plant kit is a rapid, simple procedure for the isolation of high molecular weight total DNA. Total DNA includes genomic, mitochondrial, and chloroplast DNA. This spin column method yields PCR-quality DNA in less than 1 h without the use of chemical solvents or ethanol precipitation.

<sup>1</sup> Division of Scientific Services, Department of Public Safety, 278 Colony Street, Meriden, CT.

<sup>2</sup> Royal Canadian Mounted Police, Forensic Laboratory Service-Winnipeg, Manitoba, Canada R3N 0E7.

\* A portion of this work was presented at the American Academy of Forensic Sciences Annual Meeting, 19–24 Feb. 2001, Seattle, WA.

Received 18 June 2001; and in revised form 8 June and 9 Sept. 2002; accepted 21 Sept. 2002; published 3 Feb. 2003.

To assess the quality of the recovered DNA, amplified fragment length polymorphism analysis (AFLP) was performed (8). Here, the authors define quality as the lack of PCR inhibitory substances (phenolics, tannins, resins) and absence of notable changes in AFLP profiles that might result from random shearing of the DNA.

AFLP is a PCR technique used to simultaneously visualize multiple amplified restriction fragments and is used by plant researchers to create DNA profiles for plant varieties and genetic linkage maps. AFLP fragments (Plant Mapping Kit; Applied Biosystems, Inc., Foster City, CA) generate a fluorescent band pattern using the same dyes and laser technology as short tandem repeat (STR) tests for human identity testing. The fluorescent band patterns are converted to peak profiles using GeneScan software (Applied Biosystems, Inc.). DNA profiles can be compared by superimposing profiles to determine if they match. The AFLP technique is useful for organisms where short tandem repeat (STR) loci have not been identified and has been successfully used on a variety of organisms including: barley (9), potato (10), tomato (11), soybean (12) and bacteria (13–15).

## Materials and Methods

### Plant Materials

**Seizure Samples**—Separate marijuana seizure samples were used in this study and designated as #1016, #12335, #12771, #8556 and #AA. These samples were obtained through the Connecticut State Toxicology Laboratory. Each of these samples consisted of leaf, flower (bud) and/or seed material. The Connecticut State Toxicology Laboratory, using gas chromatography/mass spectrometry (GC/MS) to confirm the presence of delta-9-tetrahydrocannabinol (THC), previously identified these samples as marijuana.

**Clonal Samples**—The mother and clonal marijuana plant samples were provided by the Royal Canadian Mounted Police (RCMP) Drug Section. Samples were collected from four distinct mother plants and two generations of clonally propagated plants.

### DNA Extraction

DNA was extracted from 100 mg of starting material using either the CTAB extraction method or the Plant DNeasy kit (QIAGEN;

Valencia, CA). For the CTAB extraction, the published protocol was used with the following exceptions: 1) the sample size and volume were scaled down for use with 100 mg of plant material to allow a direct comparison with the DNeasy kit and 2) the isopropanol precipitation step was allowed to proceed overnight at room temperature. For the DNeasy kit, the manufacturer's recommendations were followed. Both methods require mechanical disruption of the plant cell wall by grinding in liquid nitrogen. A ceramic mortar and pestle was used for the seizure sample DNA extractions while a disposable plastic micropestle was used for extraction of the clonal samples provided by the RCMP. Between grinding steps, the ceramic mortar and pestle was cleaned using 10% bleach and rinsed copiously with sterile distilled water to prevent cross-contamination between marijuana samples. DNA yields were estimated by comparison with genomic DNA standards (K562; Life Technologies, Gaithersburg, MD) after electrophoresis on 1% agarose gels containing ethidium bromide for visualization. DNA recovered from each method was resuspended in 100  $\mu$ L of the appropriately recommended buffer and 10  $\mu$ L of each sample (1/10 volume) was loaded on the agarose gel.

### DNA Amplification and Analysis of AFLP Peak Profiles

AFLP was used to determine if the extracted DNA was of PCR quality and if reproducible profiles could be obtained from independent extractions of clonal material. The amplified fragment length polymorphism (AFLP) method was performed as recommended by the manufacturer (Plant Mapping Kit; Applied Biosystems, Inc.). For all marijuana samples, the following selective PCR primer sets were used: EcoRI-AAG-Joe and MseI-CAT; EcoRI-ACT-FAM and MseI-CAA. These primer sets were selected based on the peak complexity (information value) of the AFLP profiles. Amplification products were separated and visualized by laser excitation of the fluorescent dyes on an ABI model 377 DNA sequencer. ABI collection software was used to record the data for analysis. AFLP patterns from each sample were analyzed using GeneScan software and compared by overlaying peak profiles. To facilitate the analysis, profiles were assigned a color using the GeneScan software. The assigned color does not necessarily correspond to the dye color of the PCR primer set.

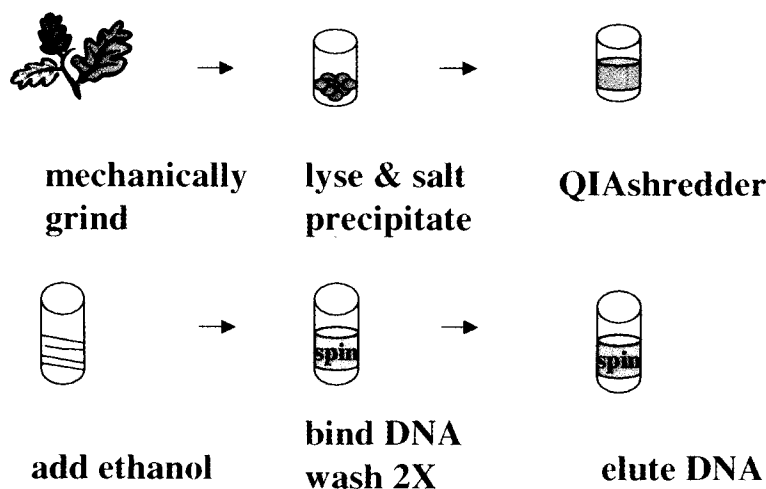


FIG. 1—Schematic of the QIAGEN plant DNeasy DNA extraction method. The basic steps include tissue disruption, cell lysis and precipitation of cellular debris and salts through a QIAshredder spin column. Ethanol is added to clear the lysate prior to passing the lysate through a second spin column to bind the DNA to a membrane. The DNA remains bound while proteins and polysaccharides are removed by washing. The DNA is finally eluted off the membrane in a small volume of low-salt buffer or water.

## Results a

The pr compared and the hi ing the Q der, cells debris an Ashredde membran 1). The re for some were also source of processer any visib ples was opment). mg) mar The aver ng of tot

The C bor inter chancal followed tracted v aqueous the DNA nal resus high mo of the a plexed v Shutler,

The al liquid ni portant t

FIG. 2 on a 1%

## Discussion

benefits of the QIAGEN DNeasy plant kit when compared to the CTAB procedure are the speed of DNA recovery and high DNA yield (low viscosity, lack of tannins). Using the DNeasy kit, marijuana samples were ground to a fine powder and polysaccharides precipitated. Cell debris and proteins were removed through a filtration unit (included in the kit). DNA was bound to a silica-gel membrane, washed twice and eluted in sterile, distilled water (Fig. 2). The DNA was typically of high molecular weight but samples and seeds, low molecular weight fragments were observed. Fresh tissue and seeds were a particularly good source of high molecular weight DNA. Of the forty samples extracted using the DNeasy kit, only four samples failed to yield DNA. The lack of DNA recovery from these four samples was likely due to the starting material (poor seed development). The average yield from both fresh (100 mg) and dried (20 mg) was 125–500 ng of total DNA per sample (Fig. 2). The DNA yield from individual seeds was also 125–500 ng (Fig. 3).

The DNeasy procedure yielded adequate DNA but was more laborious than the QIAGEN kit. CTAB extraction involves mechanical disruption of the plant cells by grinding in liquid nitrogen followed by extraction in heated extraction buffer (1). The lysate is extracted with chloroform-isoamyl alcohol and centrifuged. The organic phase is removed and isopropanol is added to precipitate DNA. The precipitated DNA is washed several times before final elution. With fresh (non-dried) marijuana leaf samples, a low molecular weight fluorescent material remained in the wells of the gel during electrophoresis (possibly DNA carbohydrates) (personal communication, Dr. Gary L. Smith).

We noted that the mechanical cell disruption step using liquid nitrogen can significantly affect the final DNA yield. It is important to grind the tissue to a fine, white powder in liquid nitrogen

without allowing it to thaw. For the DNeasy kit, there is an optional centrifugation step recommended by the manufacturer after lysing the plant tissue but prior to using the QIAshredder spin column. Performing the centrifugation step significantly enhanced the quality of the marijuana DNA since it prevented shearing due to sam-

## Quantitation

**Standards (ng) 1016**

400 200 100 50 25 12.5 S1 S2 S3 S4 S5 S6 S7 S8

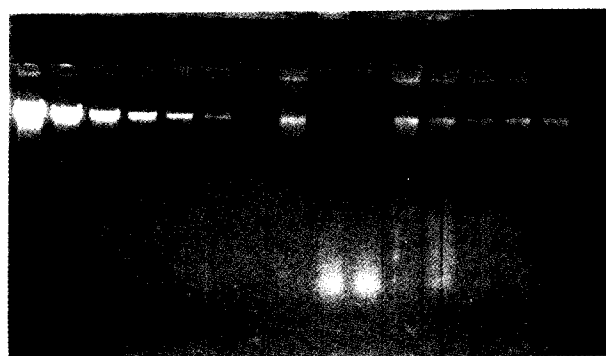
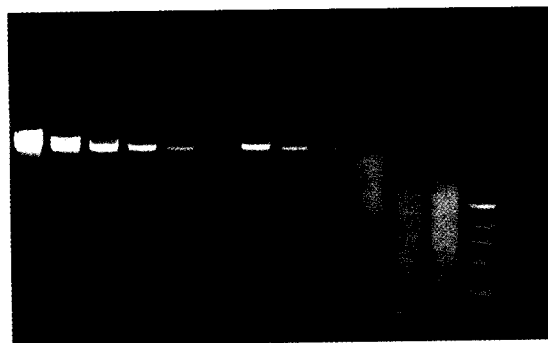


FIG. 3—The DNA yields (10% of total DNA) from extractions (seizure #1016) of *Cannabis* seeds using the DNeasy extraction method are visualized on a 1% agarose gel stained with ethidium bromide. S1 through S8 are the sample designations for individual seeds. The average yield was 125–500 ng per seed.

## Quantitation

**Standards (ng)**

400 200 100 50 25 12.5 Fresh Flower Fresh Leaf Fresh Stem Dried Flower 1 Dried Flower 2 Dried Flower 3 1 Kb Ladder



–3.0 Kb

–1.0 Kb

–0.5 Kb

ical DNA yields from fresh and dried *Cannabis* samples. Ten percent of the extracted DNA per sample was loaded per lane and visualized on a 1% agarose gel stained with ethidium bromide after DNeasy extraction. The average yield was 125–500 ng per sample.

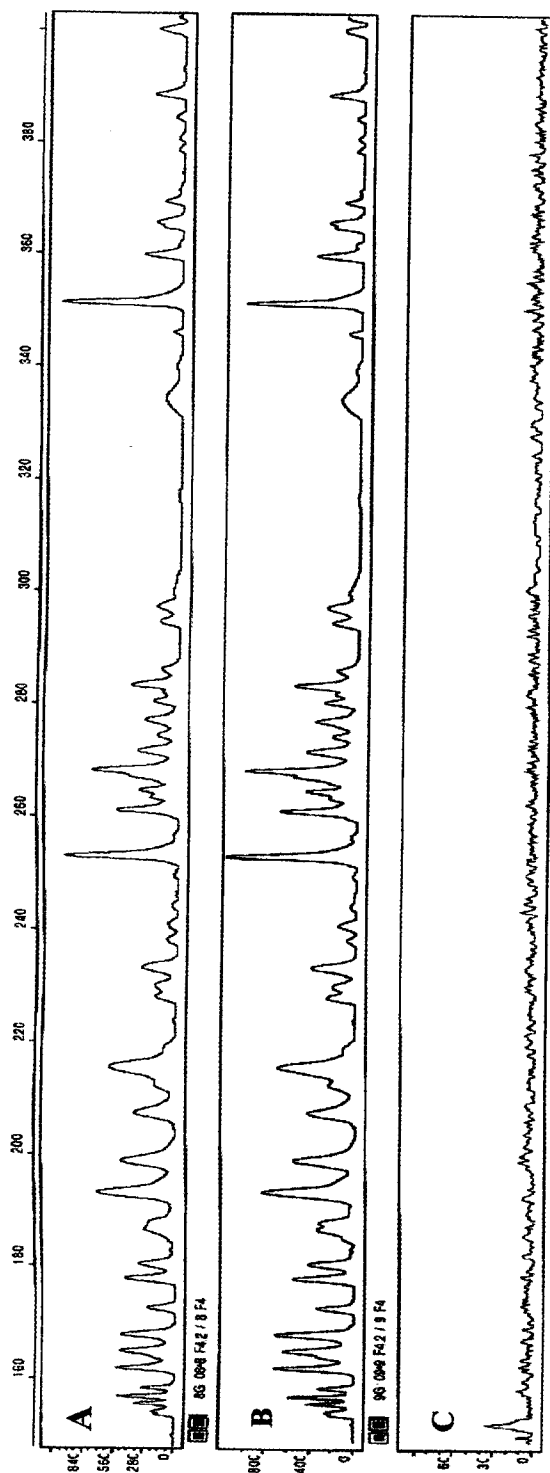


FIG. 4—Clonal marijuana plants have identical AFLP profiles. The *C. sativa* variety "Redwood" clones (panel A, generation 2; panel B, generation 3) are compared after DNeasy kit extraction and AFLP analysis. AFLP analysis was performed on 10 ng of DNA from each clone using the selective PCR primers EcoRI-AAG-Joe and MseI-CAT. Slight variations in the fluorescence intensity (y-axis, relative fluorescence units) of peaks between clones has been observed but sizing (x-axis, bases) of the peaks results in nearly exact profiles. The negative control (panel C, no DNA) exhibits no peaks.

ple v  
show  
AF  
that y  
AFL  
samp  
that d  
gener  
DNA  
extra  
ducib  
from  
steps  
the D  
Th  
juana  
ful fo  
techn  
tify C  
classi  
cysto  
tolith  
plant  
(2). A  
frequ  
metho  
fied b  
canna  
strum  
samp  
phy d  
altern  
identi  
achie  
intern  
ful fo  
cysto  
specie  
proces  
scribe  
juana  
In s  
to effi  
PCR-  
metho  
purpo  
juana  
The D  
extra  
recov  
consu  
remov  
sampl  
rificat

Ackno

The  
Crozi

viscosity as it was pulled through the spin column (data not shown).

AFLP analysis was performed on all DNeasy extracted samples that yielded visible DNA on the agarose gel. For these samples, AFLP profiles were successfully generated. For many of these samples, a single PCR primer pair could generate an AFLP profile that distinguished between individuals. Importantly, AFLP profiles generated from clones were identical (Fig. 4) indicating a lack of DNA shearing that might prevent profile reproducibility. Duplicate extractions from the same marijuana sample also yielded reproducible AFLP profiles. The reproducibility of the AFLP profiles from separate extractions and from clonal plants indicated that the steps performed in the plant DNeasy kit do not affect the quality of the DNA for AFLP typing.

The authors are specifically interested in individualizing marijuana samples; however, this DNA extraction method may be useful for other laboratories that wish to use DNA-based identification techniques. A variety of methods are currently employed to identify *Cannabis sativa* L. (marijuana). Marijuana can be identified by classical botanical characterization, especially using the type of cystolith hairs present on the leaves. However, presence of cystolith hairs is not a conclusive identification since more than eighty plant species have cystolith hair morphology similar to *Cannabis* (2). A chemical screening test, the Duquenois-Levine color test, is frequently used in combination with cystolith hair observation as a method to identify *Cannabis* (1,3,4). Marijuana can also be identified by chemical methods that test for the presence of tetrahydrocannabinol and other cannabinoids using chromatography or instrumental analysis (GC/MS) (5). Unfortunately, not all *Cannabis* samples exhibit detectable levels of cannabinoids by chromatography due to cannabinoid instability in certain solvents (16,17). An alternate but rarely used strategy relies on molecular genetics to identify *Cannabis*. *Cannabis* species identification has been achieved by cloning and sequencing the nuclear ribosomal DNA internal transcribed spacer regions (6,7). This strategy may be useful for species identification of *Cannabis* seeds and roots that lack cystolith hairs or detectable THC. Previous reports on marijuana species identification by molecular methods have used the CTAB procedure for DNA extractions (6,7). The QIAGEN method described here is significantly faster and easier for obtaining marijuana DNA than the CTAB procedure.

In summary, we have used the plant DNeasy kit from QIAGEN to efficiently process marijuana leaf and seed samples and obtained PCR-quality DNA. Our goal is to develop an easy, reproducible method for individualizing marijuana samples for law enforcement purposes. Identification of a reliable, convenient method for marijuana DNA extraction is the first step toward achieving that goal. The DNeasy kit represents a distinct improvement over the CTAB extraction method. It requires a small amount of sample, has a high recovery rate, and eliminates the need for solvents or time-consuming ethanol precipitation steps. In addition, the DNeasy kit removes many of the PCR inhibitory compounds found in plant samples during the extraction steps thus preventing additional purification steps without loss of quality or yield.

#### Acknowledgments

The authors thank Cst. Giovanni Perisichetti and Cst. Mike Crozier from the RCMP Winnipeg Drug Section for their efforts in

plant propagation and advice in this study. Technical assistance from Mr. Steve Towse, RCMP Forensic Laboratory Service-Winnipeg was appreciated. The authors thank Dr. Richard Pinder of the Connecticut State Toxicology Laboratory for review of the manuscript. Thank you to Paul Penders of the Connecticut State Forensic Science Laboratory for photographic assistance.

#### References

1. Doyle JJ, Doyle JL. Isolation of plant DNA from fresh tissue. *Focus* 1990;12:13-15.
2. Nakamura GR. Forensic aspects of cystolith hairs of *Cannabis* and other plants. *J Assoc Off Anal Chem* 1969;52:5-16.
3. Butler W. Duquenois-Levine test for marijuana. *J Assoc Off Anal Chem* 1962;45:597-600.
4. Pitt CG, Hendron RW, Hsia RS. The specificity of the Duquenois color test for marijuana and hashish. *J Forensic Sci* 1972;17:693-700.
5. Barni Comparini I, Centini F. Packed column chromatography, high resolution gas chromatography and high pressure liquid chromatography in comparison for the analysis of *Cannabis* constituents. *Forensic Sci Int* 1983;21:129-37.
6. Siniscalco Gigliano G. Preliminary data on the usefulness of internal transcribed spacer I (ITS1) sequence in *Cannabis sativa* L. identification. *J Forensic Sci* 1999;44(3):475-7.
7. Siniscalco Gigliano G, Caputo P, Cozzolino S. Ribosomal DNA analysis as a tool for the identification of *Cannabis sativa* L. specimens of forensic interest. *Science & Justice* 1997;37(3):171-4.
8. Vos P, Hogers R, Bleeker M, Reijans M, van de Lee T, Hornes M, et al. AFLP: a new technique for DNA fingerprinting. *Nucleic Acids Res* 1995;23(21):4407-14.
9. Becker J, Vos P, Kuiper M, Salamini F, Heun M. Combined mapping of AFLP and RFLP markers in barley. *Mol Gen Genet* 1995;249:65-73.
10. Van Eck HJ, van der Voort JR, Draaistra J, van Zandvoort P, van Enckevort E, Segers B, et al. The inheritance and chromosomal location of AFLP markers in a non-inbred potato offspring. *Molecular Breeding* 1995;1:397-410.
11. Thomas CM, Vos P, Zabiau M, Jones DA, Norcott KA, Chadwick BP, et al. Identification of amplified restriction fragment polymorphism (AFLP) markers tightly linked to the tomato Cf-9 gene for resistance to *Cladosporium fulvum*. *Plant J* 1995;8(5):785-94.
12. Lin J-J, Kuo J, Ma J, Saunders JA, Beard HS, MacDonald MH, et al. Identification of molecular markers in soybean-comparing RFLP, RAPD, and AFLP DNA mapping techniques. *Plant Mol Biol Rep* 1996;14(2):156-69.
13. Janssen P, Coopman R, Huys G, Swings J, Bleeker M, Vos P, et al. Evaluation of the DNA fingerprinting method AFLP as a new tool in bacterial taxonomy. *Microbiology* 1996;142:1881-93.
14. Huys G, Coopman R, Janssen P, Kersters K. High-resolution genotypic analysis of the genus *Aeromonas* by AFLP fingerprinting. *Int J Syst Bacteriol* 1996;46(2):572-80.
15. Dijkshoorn L, Aucken H, Gerner-Smidt P, Janssen P, Kaufmann ME, Garaizar J, et al. Comparison of outbreak and nonoutbreak *Acinetobacter baumannii* strains by genotypic and phenotypic methods. *J Clin Microbiol* 1996;34(6):1519-25.
16. DeZeeuw RA, Wijsbeek J, Malingre TM. Interference of alkanes in the gas chromatographic analysis of *Cannabis* products. *J Pharm Pharmacol* 1973;25:21-6.
17. Parker JM, Borke ML, Block LH, Cochran TG. Decomposition of cannabinol in chloroform solution. *J Pharm Sci* 1974;63:970-1.

Additional information and reprint requests:

Heather Miller Coyle, Ph.D.

Criminalist

Division of Scientific Services

Department of Public Safety

278 Colony Street

Meriden, CT USA 06451

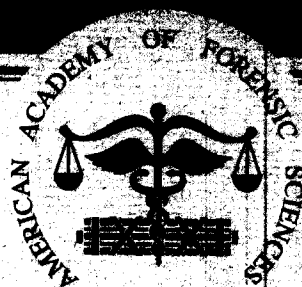
E-mail: C4ensic@yahoo.com

## Contents

Anthropology	
Metric Method for Sex Determination Using the Hipbone and the Femur—JOHN ALBANESE	263
Technical Notes	
Fast and Safe Non-Bleaching Method for Forensic Skeletal Preparation—TODD W. FENTON, WALTER H. BIRKBY, AND JERED CORNELISON	274
Case Report	
Struck With A Fist: The Etiology of a Fatal Depressed Cranial Fracture—TODD W. FENTON, JOYCE L. DEJONG, AND ROGER C. HAUT	277
Forensic Toxicology	
Development of an <i>Alu</i> -Based, QSY 7-Labeled Primer PCR Method for Quantitation of Human DNA in Forensic Samples—JANICE A. NICKLAS AND ERIC BUEL	282
Identification and Quantitation of Gamma-Hydroxybutyrate (NaGHB) by Nuclear Magnetic Resonance Spectroscopy—SHIRLEY L. CHEW AND JOHN A. MEYERS	292
Evaluation of Extraction Techniques for the Forensic Analysis of Human Scalp Hair Using Gas Chromatography/Mass Spectrometry (GC/MS)—JOHN V. GOODPASTER, BYRON C. DRUMHELLER, AND BRUCE A. BENNER, JR.	299
Fire Since Discharge of Pistols and Revolvers—J. ANDRASKO AND S. STÄHLING	307
Water-Soaked Evidence: Detectability of Explosive Traces After Immersion in Water—ALEXANDER KAMYSHNY, SHLOMO MAGDASSI, YANIV AVISSAR, AND JOSEPH ALMOG	312
Arm and Toolmark Identification Criteria: A Review of the Literature, Part II—RONALD G. NICHOLS	318
Fingernails of Mary Sullivan: Developing Reliable Methods for Selectively Isolating Endogenous and Exogenous DNA from Evidence—RACHEL E. CLINE, NICOLE M. LAURENT, AND DAVID R. FORAN	328
Traces in Explosive Contamination—JIMMIE C. OXLEY, JAMES L. SMITH, ELMO RESENDE, EVAN PEARCE, AND THOMAS CHAMBERLAIN	334
Technical Notes	
Simple DNA Extraction Method for Marijuana Samples Used in Amplified Fragment Length Polymorphism (AFLP) Analysis—HEATHER MILLER COYLE, GARY SHUTLER, SHARON ABRAMS, JANET HANNIMAN, SUZANNE NEYLON, CARLL LADD, TIMOTHY PALMBACH, AND HENRY C. LEE	343
Performance Evaluation of Two Multiplexes Used in Fluorescent Short Tandem Repeat DNA Analysis—EDWARD L. BUSE, JEANNE C. PUTINIER, MARY M. HONG, AIMEE E. YAP, AND JOHN M. HARTMANN	348
Variant Alleles on the Penta E Locus in the PowerPlex® 16 Kit—NATSUKO MIZUNO, KAZUMASA SEKIGUCHI, HAJIME SATO, AND KENTARO KASAI	358
General	
Comprehensive Analysis of Forensic Science Training in Forensic Pathology Fellowship Programs—J. KEITH PINCKARD, DONNA HUNSAKER, AND VICTOR W. WEEDN	362

JOURNAL OF

# Forensic Sciences



1948

VOLUME 48  
NUMBER 2  
MAY 2003

ISSN 0886-2559/03/020259-08\$10.00

University of Oregon Library  
Received on: 03-26-03  
Journal of forensic sciences